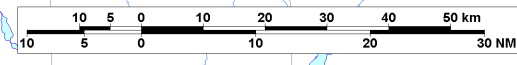
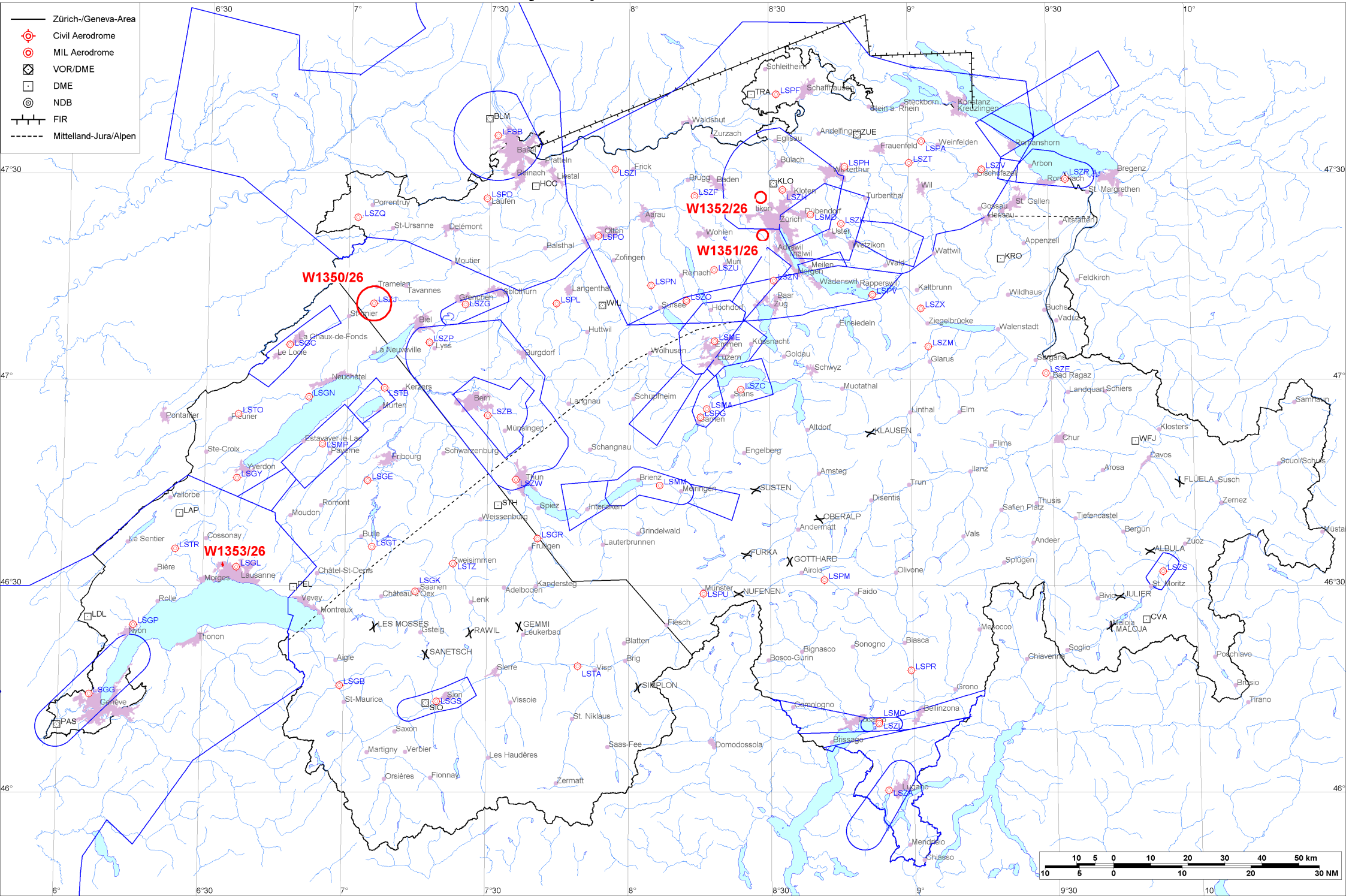


- Zürich-/Geneva-Area
- ⊕ Civil Aerodrome
- ⊙ MIL Aerodrome
- ⊠ VOR/DME
- DME
- ⊙ NDB
- FIR
- - - - - Mittelland-Jura/Alpen





Firings / AIP-Areas / Warnings:

Firing-Nr AIP-Area NOTAM-Nr	Validity UTC	Lower Limit (m/ft AMSL or FL)	Upper Limit (m/ft AMSL or FL)	Center Point	Covering Radius	NOTAM Item E
W1350/26	0800 - 1300	GND	2150m / 7000ft	471100N 0070527E	4.7KM / 2.6NM	INTENSE GLD FLYING WILL TAKE PLACE AT LSZJ AD DUE TO REGIONAL CHAMPIONSHIP, RADIUS 4.6KM (471100N0070527E RADIUS 2.5NM).
W1351/26	0000 - 2359	GND	550m / 1850ft	472054N 0082837E	0.3KM / 0.2NM	UNMANNED DRONE BEYOND VISUAL LINE OF SIGHT (BVLOS) OPERATIONS WILL TAKE PLACE AT AND BELOW 66FT AGL OVER STALLIKON, 5.8KM SW ZURICH, RADIUS 0.2KM (472054N0082837E RADIUS 0.2NM). FOR INFORMATION CTC TEL +41 79 472 37 80 AND REFER TO WWW.MAP.GEO.ADMIN.CH TOPIC AVIATION UAS AWARENESS MAP.
W1352/26	0400 - 1800	GND	600m / 1950ft	472626N 0082814E	0.3KM / 0.2NM	UNMANNED DRONE BEYOND VISUAL LINE OF SIGHT OPERATIONS WILL TAKE PLACE AT AND BELOW 500FT AGL IN REGENSDORF, 6.2KM WSW LSZH AD, RADIUS 0.2KM (472626N0082814E RADIUS 0.2NM). FOR INFORMATION CTC +41 79 124 10 48 AND REFER TO WWW.MAP.GEO.ADMIN.CH TOPIC AVIATION UAS AWARENESS MAP.
W1353/26	0356 - 1857	GND	500m / 1600ft	463259N 0063411E	0.1KM / 0.1NM	UNMANNED DRONE BEYOND VISUAL LINE OF SIGHT (BVLOS) OPERATIONS WILL TAKE PLACE AT AND BELOW 148FT AGL OVER MILLENNIUM BUILDING CRISSIER, 3.7KM W LSGE AD, 463302N0063410E 463302N0063409E 463302N0063409E 463301N0063409E 463256N0063411E 463300N0063415E 463302N0063410E (463259N0063411E RADIUS 0.1NM). FOR INFORMATION CTC TEL +41 84 410 53 30 AND REFER TO WWW.MAP.GEO.ADMIN.CH TOPIC AVIATION UAS AWARENESS MAP.

Activities not shown on the DABS Chart Side:

NOTAM-Nr	Validity UTC	Lower Limit (m/ft AMSL or FL)	Upper Limit (m/ft AMSL or FL)	Center Point	Covering Radius	NOTAM Item E
None						

For detailed information regarding the DABS see AIP Switzerland GEN 3.1-5 or VFR GEN 1-0-4.