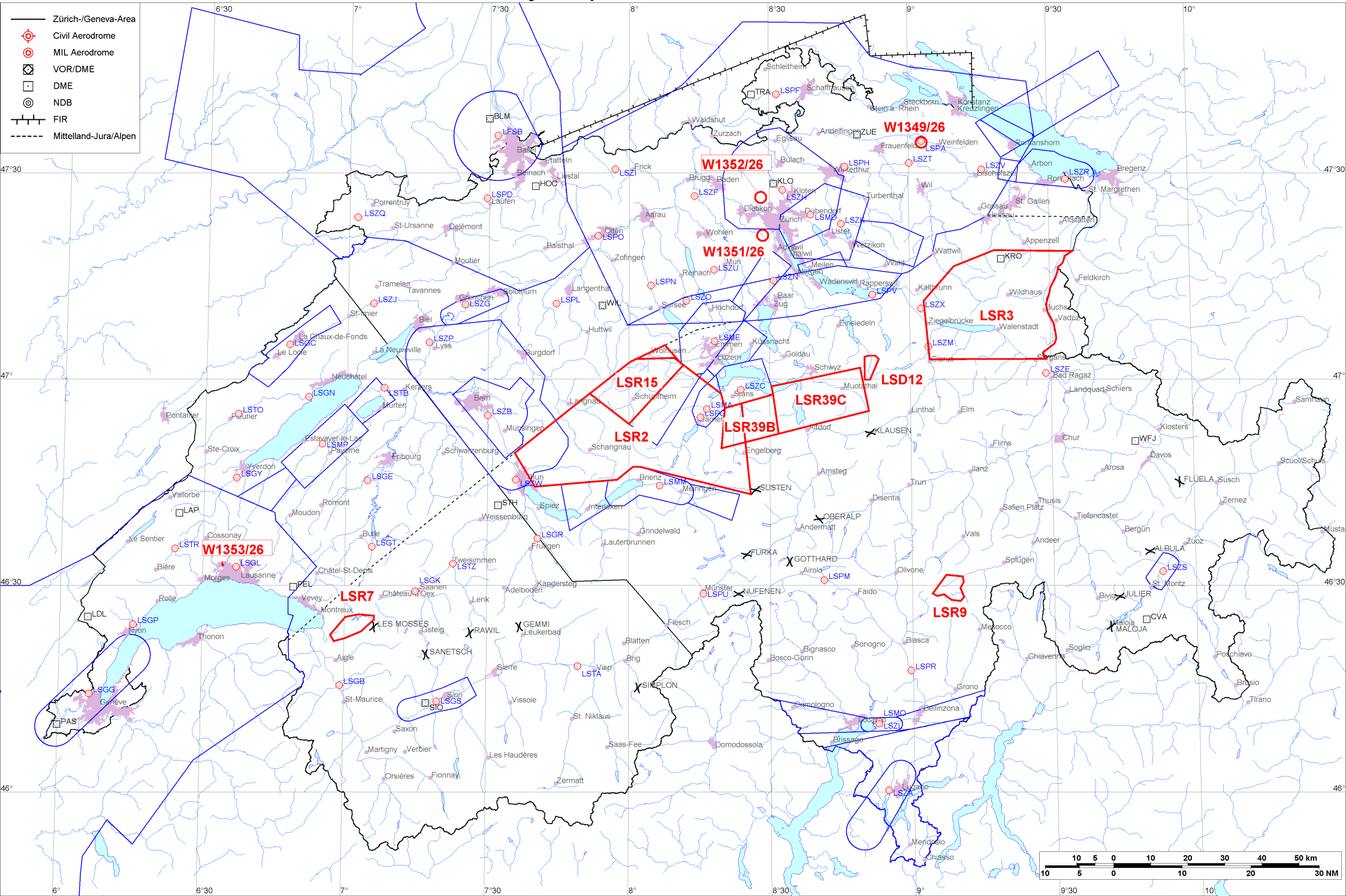


- Zürich-/Geneva-Area
- ⊕ Civil Aerodrome
- ⊙ MIL Aerodrome
- ⊠ VOR/DME
- DME
- ⊙ NDB
- FIR
- - - - - Mittelland-Jura/Alpen





Firings / AIP-Areas / Warnings:

Firing-Nr AIP-Area NOTAM-Nr	Validity UTC	Lower Limit (m/ft AMSL or FL)	Upper Limit (m/ft AMSL or FL)	Center Point	Covering Radius	NOTAM Item E
LSD12 W0315/26	0600 - 1000 1100 - 2100	GND	1800m / 5900ft	470140N 0085126E	3.6KM / 2.0NM	D-AREA LSD12 SIHLTAL ACT.
LSR2 W1378/26	0750 - 0830 1140 - 1220 1350 - 1430	FL100	FL130	464812N 0080120E	32.6KM / 17.6NM	R-AREA LSR2 HOHGANT ACT.
LSR3 W1376/26	1145 - 1225 1345 - 1425	FL100	FL130	471047N 0091932E	24.4KM / 13.2NM	R-AREA LSR3 SPEER ACT.
LSR7 W1359/26	0530 - 2100	GND	4700m / 15500ft	462408N 0070145E	6.5KM / 3.5NM	R-AREA LSR7 HONGRIN ACT DUE TO FRNG.
LSR9 W1372/26	0700 - 2100	GND	4700m / 15500ft	462943N 0090743E	4.8KM / 2.6NM	R-AREA LSR9 HINTERRHEIN ACT DUE TO FRNG.
! LSR15 W1382/26	1145 - 1415	1700m / 5500ft	FL100	465958N 0080137E	13.3KM / 7.2NM	R-AREA LSR15 ENTLEBUCH ACT. !
LSR39B W1369/26	0700 - 0900 1200 - 1400	2750m / 9000ft	FL130	465352N 0082513E	10.1KM / 5.5NM	R-AREA LSR39B BRISEN ACT. LOWER LIMIT 9000FT AMSL OR 2000FT GND WHICHEVER IS HIGHER.
LSR39C W1370/26	0700 - 0900 1200 - 1400	2750m / 9000ft	FL130	465652N 0084033E	14.2KM / 7.7NM	R-AREA LSR39C STOOS ACT. LOWER LIMIT 9000FT AMSL OR 2000FT GND WHICHEVER IS HIGHER.
! W1349/26	2130 - 2359	GND	FL195	473426N 0090252E	0.3KM / 0.2NM	TEMPO R-AREA AMLIKON ESTABLISHED RADIUS 0.2KM (473426N0090252E RADIUS 0.2NM). WX MEASUREMENTS BY REMOTELY PILOTED AERIAL SYSTEM WILL TAKE PLACE. WHITE BLINKING PSN LGT WITH VISUAL RANGE OF AT LEAST 3KM. ENTRY PROHIBITED WHEN ACT EXC HEL EMERG MEDICAL SER (HEMS). FOR INFO ON ACT AND HEMS CTC TEL +41 79 772 93 32 OR +41 79 596 93 33. !
W1351/26	0000 - 2359	GND	550m / 1850ft	472054N 0082837E	0.3KM / 0.2NM	UNMANNED DRONE BEYOND VISUAL LINE OF SIGHT (BVLOS) OPERATIONS WILL TAKE PLACE AT AND BELOW 66FT AGL OVER STALLIKON, 5.8KM SW ZURICH, RADIUS 0.2KM (472054N0082837E RADIUS 0.2NM). FOR INFORMATION CTC TEL +41 79 472 37 80 AND REFER TO WWW.MAP.GEO.ADMIN.CH TOPIC AVIATION UAS AWARENESS MAP.
W1352/26	0400 - 1800	GND	600m / 1950ft	472626N 0082814E	0.3KM / 0.2NM	UNMANNED DRONE BEYOND VISUAL LINE OF SIGHT OPERATIONS WILL TAKE PLACE AT AND BELOW 500FT AGL IN REGENSDORF, 6.2KM WSW LSZH AD, RADIUS 0.2KM (472626N0082814E RADIUS 0.2NM). FOR INFORMATION CTC +41 79 124 10 48 AND REFER TO WWW.MAP.GEO.ADMIN.CH TOPIC AVIATION UAS AWARENESS MAP.



Firing-Nr AIP-Area NOTAM-Nr	Validity UTC	Lower Limit (m/ft AMSL or FL)	Upper Limit (m/ft AMSL or FL)	Center Point	Covering Radius	NOTAM Item E
W1353/26	0349 - 1904	GND	500m / 1600ft	463259N 0063411E	0.1KM / 0.1NM	UNMANNED DRONE BEYOND VISUAL LINE OF SIGHT (BVLOS) OPERATIONS WILL TAKE PLACE AT AND BELOW 148FT AGL OVER MILLENNIUM BUILDING CRISSIER, 3.7KM W LSGL AD, 463302N0063410E 463302N0063409E 463302N0063409E 463301N0063409E 463256N0063411E 463300N0063415E 463302N0063410E (463259N0063411E RADIUS 0.1NM). FOR INFORMATION CTC TEL +41 84 410 53 30 AND REFER TO WWW.MAP.GEO.ADMIN.CH TOPIC AVIATION UAS AWARENESS MAP.

Activities not shown on the DABS Chart Side:

NOTAM-Nr	Validity UTC	Lower Limit (m/ft AMSL or FL)	Upper Limit (m/ft AMSL or FL)	Center Point	Covering Radius	NOTAM Item E
None						

For detailed information regarding the DABS see AIP Switzerland GEN 3.1-5 or VFR GEN 1-0-4.

! New or changed data regarding an earlier version of the DABS.