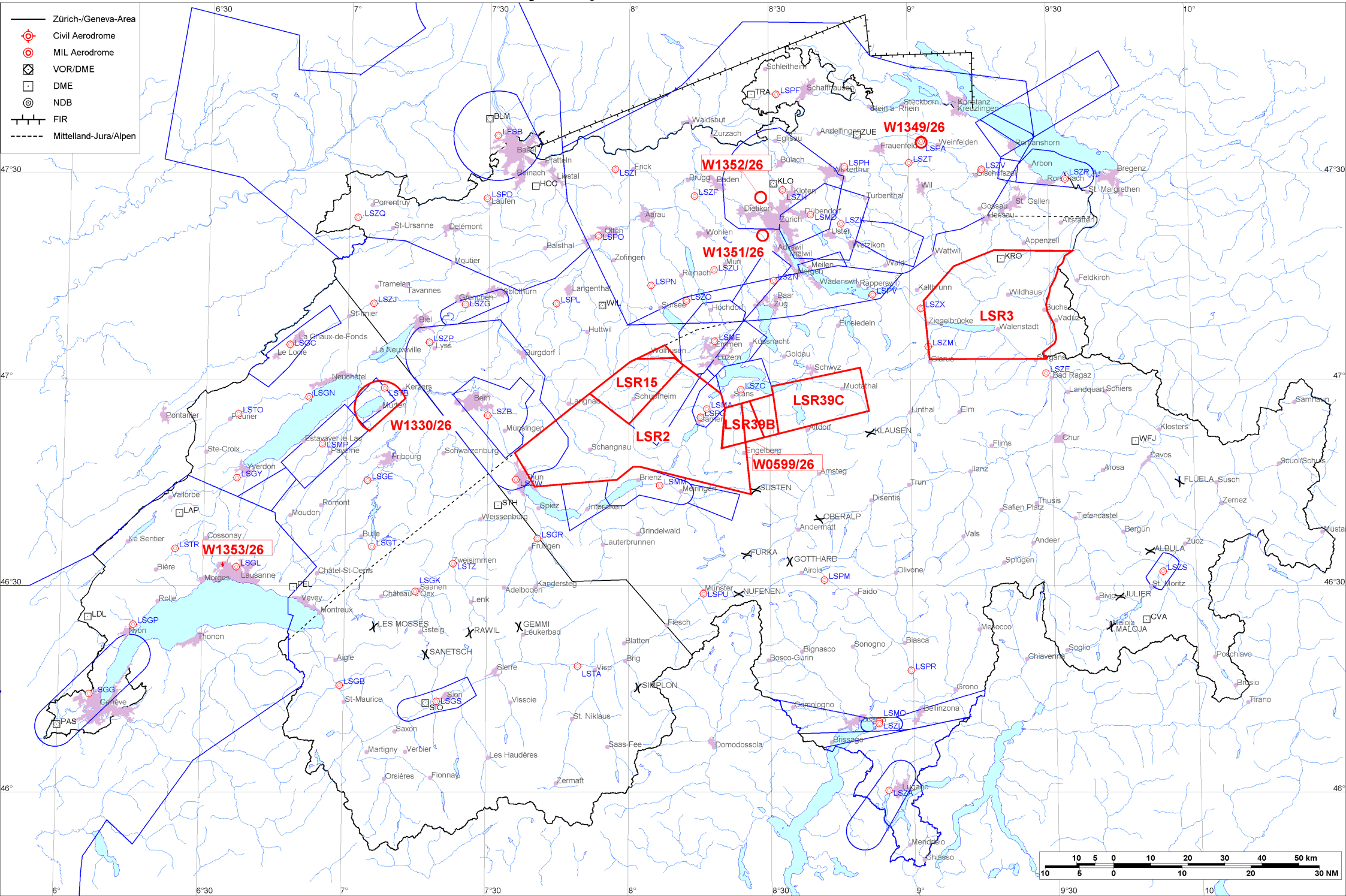


- Zürich-/Geneva-Area
- ⊕ Civil Aerodrome
- ⊙ MIL Aerodrome
- ⊠ VOR/DME
- DME
- ⊙ NDB
- FIR
- - - - - Mittelland-Jura/Alpen





Firings / AIP-Areas / Warnings:

Firing-Nr AIP-Area NOTAM-Nr	Validity UTC	Lower Limit (m/ft AMSL or FL)	Upper Limit (m/ft AMSL or FL)	Center Point	Covering Radius	NOTAM Item E
LSR2 W1398/26	0640 - 0720	FL100	FL130	464812N 0080120E	32.6KM / 17.6NM	R-AREA LSR2 HOHGANT ACT.
LSR3 W1399/26	0845 - 0925 1140 - 1220	FL100	FL130	471047N 0091932E	24.4KM / 13.2NM	R-AREA LSR3 SPEER ACT.
! LSR15 W1397/26	1130 - 1500	1700m / 5500ft	FL100	465958N 0080137E	13.3KM / 7.2NM	R-AREA LSR15 ENTLEBUCH ACT.
LSR39B W1394/26	0700 - 0900 1200 - 1400	2750m / 9000ft	FL130	465352N 0082513E	10.1KM / 5.5NM	R-AREA LSR39B BRISEN ACT. LOWER LIMIT 9000FT AMSL OR 2000FT GND WHICHEVER IS HIGHER.
LSR39C W1393/26	0700 - 0900 1200 - 1400	2750m / 9000ft	FL130	465652N 0084033E	14.2KM / 7.7NM	R-AREA LSR39C STOOS ACT. LOWER LIMIT 9000FT AMSL OR 2000FT GND WHICHEVER IS HIGHER.
W0599/26	1000 - 1615	GND	2750m / 9000ft	465307N 0082324E	7.5KM / 4.1NM	TEMPO D-AREA ENGELBERG ESTABLISHED DUE TO SWISS AND GERMAN CHAMPIONSHIPS IN DELTA HANG GLIDING WI 465547N0082027E 465648N0082542E 465131N0082845E 464957N0081950E 465547N0082027E (465307N0082324E RADIUS 4.1NM).
W1330/26	1345 - 1445	GND	2150m / 7000ft	465558N 0070707E	7.1KM / 3.8NM	TEMPO R-AREA MURTEN ESTABLISHED DUE TO AIR DISPLAY, RADIUS 7.0KM (465558N0070707E, RADIUS 3.78NM), EXCLUDING LINE SE OF 465233N0070446E - 465709N0071222E. ENTRY PROHIBITED WHEN ACTIVE, EXC HEL EMERG MEDICAL SER (HEMS). FOR INFO ON ACT CTC GENEVA INFO 126.350. HEMS CTC 130.805 FOR COORD.
W1349/26	0000 - 0300	GND	FL195	473426N 0090252E	0.3KM / 0.2NM	TEMPO R-AREA AMLIKON ESTABLISHED RADIUS 0.2KM (473426N0090252E RADIUS 0.2NM). WX MEASUREMENTS BY REMOTELY PILOTED AERIAL SYSTEM WILL TAKE PLACE. WHITE BLINKING PSN LGT WITH VISUAL RANGE OF AT LEAST 3KM. ENTRY PROHIBITED WHEN ACT EXC HEL EMERG MEDICAL SER (HEMS). FOR INFO ON ACT AND HEMS CTC TEL +41 79 772 93 32 OR +41 79 596 93 33.
W1351/26	0000 - 2359	GND	550m / 1850ft	472054N 0082837E	0.3KM / 0.2NM	UNMANNED DRONE BEYOND VISUAL LINE OF SIGHT (BVLOS) OPERATIONS WILL TAKE PLACE AT AND BELOW 66FT AGL OVER STALLIKON, 5.8KM SW ZURICH, RADIUS 0.2KM (472054N0082837E RADIUS 0.2NM). FOR INFORMATION CTC TEL +41 79 472 37 80 AND REFER TO WWW.MAP.GEO.ADMIN.CH TOPIC AVIATION UAS AWARENESS MAP.
W1352/26	0400 - 1800	GND	600m / 1950ft	472626N 0082814E	0.3KM / 0.2NM	UNMANNED DRONE BEYOND VISUAL LINE OF SIGHT OPERATIONS WILL TAKE PLACE AT AND BELOW 500FT AGL IN REGENSDORF, 6.2KM WSW LSZH AD, RADIUS 0.2KM (472626N0082814E RADIUS 0.2NM). FOR INFORMATION CTC +41 79 124 10 48 AND REFER TO WWW.MAP.GEO.ADMIN.CH TOPIC AVIATION UAS AWARENESS MAP.



Firing-Nr AIP-Area NOTAM-Nr	Validity UTC	Lower Limit (m/ft AMSL or FL)	Upper Limit (m/ft AMSL or FL)	Center Point	Covering Radius	NOTAM Item E
W1353/26	0347 - 1907	GND	500m / 1600ft	463259N 0063411E	0.1KM / 0.1NM	UNMANNED DRONE BEYOND VISUAL LINE OF SIGHT (BVLOS) OPERATIONS WILL TAKE PLACE AT AND BELOW 148FT AGL OVER MILLENNIUM BUILDING CRISSIER, 3.7KM W LSGL AD, 463302N0063410E 463302N0063409E 463302N0063409E 463301N0063409E 463256N0063411E 463300N0063415E 463302N0063410E (463259N0063411E RADIUS 0.1NM). FOR INFORMATION CTC TEL +41 84 410 53 30 AND REFER TO WWW.MAP.GEO.ADMIN.CH TOPIC AVIATION UAS AWARENESS MAP.

Activities not shown on the DABS Chart Side:

NOTAM-Nr	Validity UTC	Lower Limit (m/ft AMSL or FL)	Upper Limit (m/ft AMSL or FL)	Center Point	Covering Radius	NOTAM Item E
None						

For detailed information regarding the DABS see AIP Switzerland GEN 3.1-5 or VFR GEN 1-0-4.
! New or changed data regarding an earlier version of the DABS.