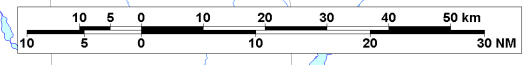
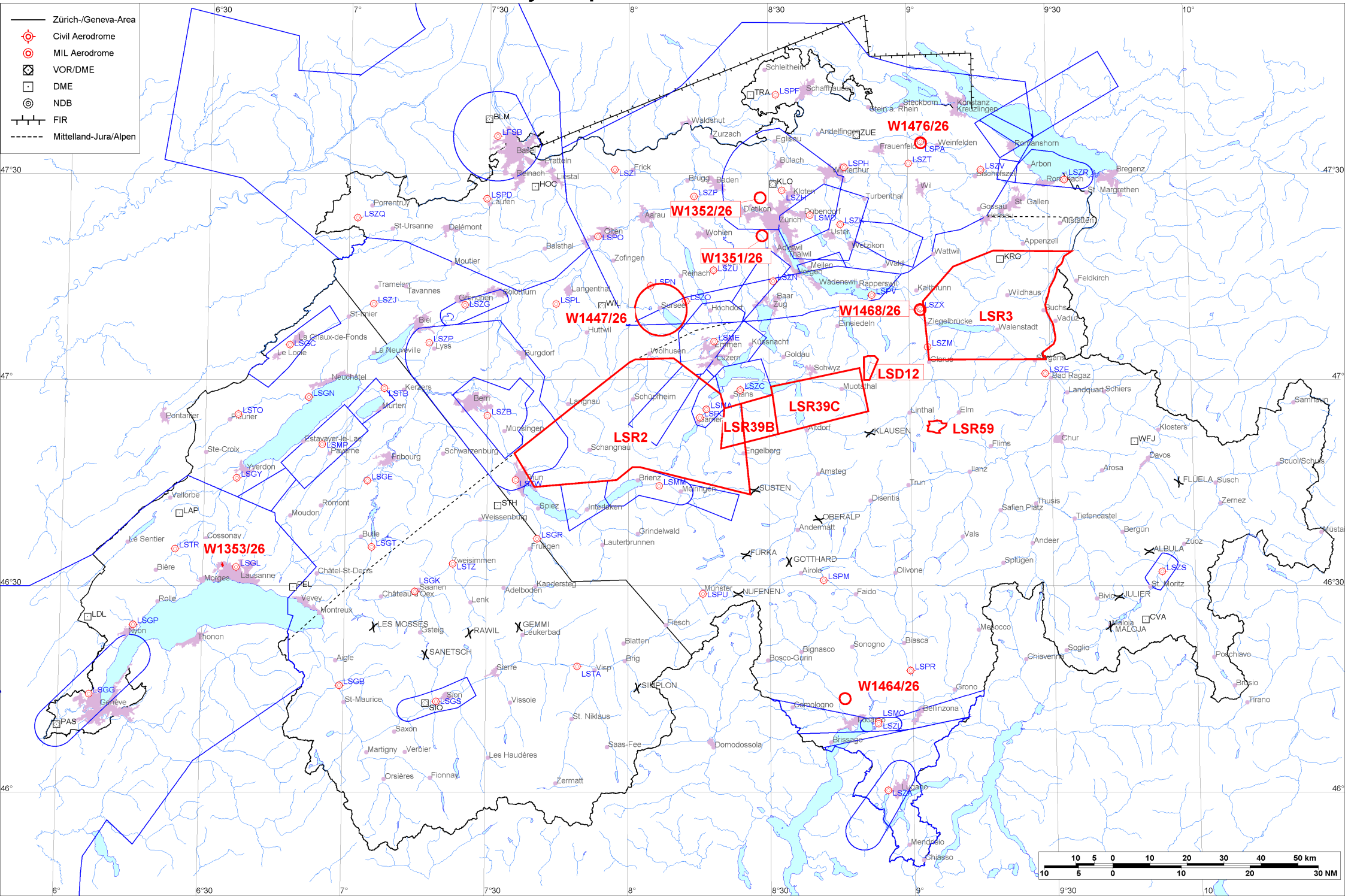


- Zürich-/Geneva-Area
- ⊙ Civil Aerodrome
- ⊙ MIL Aerodrome
- ⊠ VOR/DME
- DME
- ⊙ NDB
- FIR
- - - - - Mittelland-Jura/Alpen





Firings / AIP-Areas / Warnings:

Firing-Nr AIP-Area NOTAM-Nr	Validity UTC	Lower Limit (m/ft AMSL or FL)	Upper Limit (m/ft AMSL or FL)	Center Point	Covering Radius	NOTAM Item E
LSD12 W0315/26	0600 - 1000 1100 - 2100	GND	1800m / 5900ft	470140N 0085126E	3.6KM / 2.0NM	D-AREA LSD12 SIHLTAL ACT.
LSR2 W1487/26	0850 - 0930	FL100	FL130	464812N 0080120E	32.6KM / 17.6NM	R-AREA LSR2 HOHGANT ACT.
LSR3 W1488/26	0640 - 0720 0845 - 0925 1140 - 1220 1340 - 1420	FL100	FL130	471047N 0091932E	24.4KM / 13.2NM	R-AREA LSR3 SPEER ACT.
LSR39B W1481/26	0700 - 0900 1200 - 1400	2750m / 9000ft	FL130	465352N 0082513E	10.1KM / 5.5NM	R-AREA LSR39B BRISEN ACT. LOWER LIMIT 9000FT AMSL OR 2000FT GND WHICHEVER IS HIGHER.
LSR39C W1482/26	0700 - 0900 1200 - 1400	2750m / 9000ft	FL130	465652N 0084033E	14.2KM / 7.7NM	R-AREA LSR39C STOOS ACT. LOWER LIMIT 9000FT AMSL OR 2000FT GND WHICHEVER IS HIGHER.
LSR59 W1346/26	0600 - 1500	GND	4700m / 15500ft	465304N 0090543E	2.8KM / 1.5NM	R-AREA LSR59 WICHLEN ACT DUE TO FRNG.
W1351/26	0000 - 2359	GND	550m / 1850ft	472054N 0082837E	0.3KM / 0.2NM	UNMANNED DRONE BEYOND VISUAL LINE OF SIGHT (BVLOS) OPERATIONS WILL TAKE PLACE AT AND BELOW 66FT AGL OVER STALLIKON, 5.8KM SW ZURICH, RADIUS 0.2KM (472054N0082837E RADIUS 0.2NM). FOR INFORMATION CTC TEL +41 79 472 37 80 AND REFER TO WWW.MAP.GEO.ADMIN.CH TOPIC AVIATION UAS AWARENESS MAP.
W1352/26	0400 - 1800	GND	600m / 1950ft	472626N 0082814E	0.3KM / 0.2NM	UNMANNED DRONE BEYOND VISUAL LINE OF SIGHT OPERATIONS WILL TAKE PLACE AT AND BELOW 500FT AGL IN REGENSDORF, 6.2KM WSW LSZH AD, RADIUS 0.2KM (472626N0082814E RADIUS 0.2NM). FOR INFORMATION CTC +41 79 124 10 48 AND REFER TO WWW.MAP.GEO.ADMIN.CH TOPIC AVIATION UAS AWARENESS MAP.
W1353/26	0338 - 1919	GND	500m / 1600ft	463259N 0063411E	0.1KM / 0.1NM	UNMANNED DRONE BEYOND VISUAL LINE OF SIGHT (BVLOS) OPERATIONS WILL TAKE PLACE AT AND BELOW 148FT AGL OVER MILLENNIUM BUILDING CRISSIER, 3.7KM W LSGL AD, 463302N0063410E 463302N0063409E 463302N0063409E 463301N0063409E 463256N0063411E 463300N0063415E 463302N0063410E (463259N0063411E RADIUS 0.1NM). FOR INFORMATION CTC TEL +41 84 410 53 30 AND REFER TO WWW.MAP.GEO.ADMIN.CH TOPIC AVIATION UAS AWARENESS MAP.
W1447/26	1145 - 1245	GND	2300m / 7500ft	471009N 0080653E	7.1KM / 3.8NM	TEMPO R-AREA SURSEE ESTABLISHED DUE TO AIR DISPLAY, RADIUS 7.0KM (471009N0080653E RADIUS 3.8NM). ENTRY PROHIBITED WHEN ACT EXC HEL EMERG MEDICAL SER (HEMS). FOR INFO ON ACT CTC ZURICH INFORMATION ON 124.700. HEMS CTC 130.805 FOR COOR.
W1464/26	0500 - 2200	GND	1000m / 3300ft	461334N 0084542E	0.4KM / 0.2NM	UNMANNED ACFT ACT WILL TAKE PLACE 1.3KM ESE GORDEVIO, RADIUS 0.3KM (461334N0084542E RADIUS 0.2NM).



Firing-Nr AIP-Area NOTAM-Nr	Validity UTC	Lower Limit (m/ft AMSL or FL)	Upper Limit (m/ft AMSL or FL)	Center Point	Covering Radius	NOTAM Item E
W1468/26	0000 - 0400 2000 - 2359	GND	3400m / 11200ft	471010N 0090224E	0.6KM / 0.4NM	TEMPO D-AREA SCHANIS ESTABLISHED RADIUS 0.6KM (471010N0090224E RADIUS 0.4NM). WX MEASUREMENTS BY REMOTELY PILOTED AERIAL SYSTEM WILL TAKE PLACE. WHITE BLINKING POSITION LGT WITH VISUAL RANGE OF AT LEAST 3KM. FOR INFO ON ACT AND HEL EMERG MEDICAL SER (HEMS) CTC TEL +41 79 772 93 32.
W1476/26	0000 - 0300 2130 - 2359	GND	FL195	473426N 0090252E	0.3KM / 0.2NM	TEMPO R-AREA AMLIKON ESTABLISHED RADIUS 0.2KM (473426N0090252E RADIUS 0.2NM). WX MEASUREMENTS BY REMOTELY PILOTED AERIAL SYSTEM WILL TAKE PLACE. WHITE BLINKING PSN LGT WITH VISUAL RANGE OF AT LEAST 3KM. ENTRY PROHIBITED WHEN ACT EXC HEL EMERG MEDICAL SER (HEMS). FOR INFO ON ACT AND HEMS CTC TEL +41 79 772 93 32.

Activities not shown on the DABS Chart Side:

NOTAM-Nr	Validity UTC	Lower Limit (m/ft AMSL or FL)	Upper Limit (m/ft AMSL or FL)	Center Point	Covering Radius	NOTAM Item E
W1421/26	0000 - 2359	GND	2450m / 8000ft	463009N 0085918E	0.6KM / 0.3NM	4.7 KM SE OLIVONE ADVISED NOT TO FLY BLW 8000 FT AMSL WI RADIUS 0.5KM (463009N0085918E RADIUS 0.3NM). DUE TO NESTING OF BIRDS OF PREY.
W1422/26	0000 - 2359	GND	2450m / 8000ft	463005N 0085938E	0.5KM / 0.3NM	5.2KM SE OLIVONE ADVISED NOT TO FLY BLW 8000 FT AMSL WI RADIUS 0.5KM (463005N0085938E RADIUS 0.3NM). DUE TO NESTING OF BIRDS OF PREY.

For detailed information regarding the DABS see AIP Switzerland GEN 3.1-5 or VFR GEN 1-0-4.